



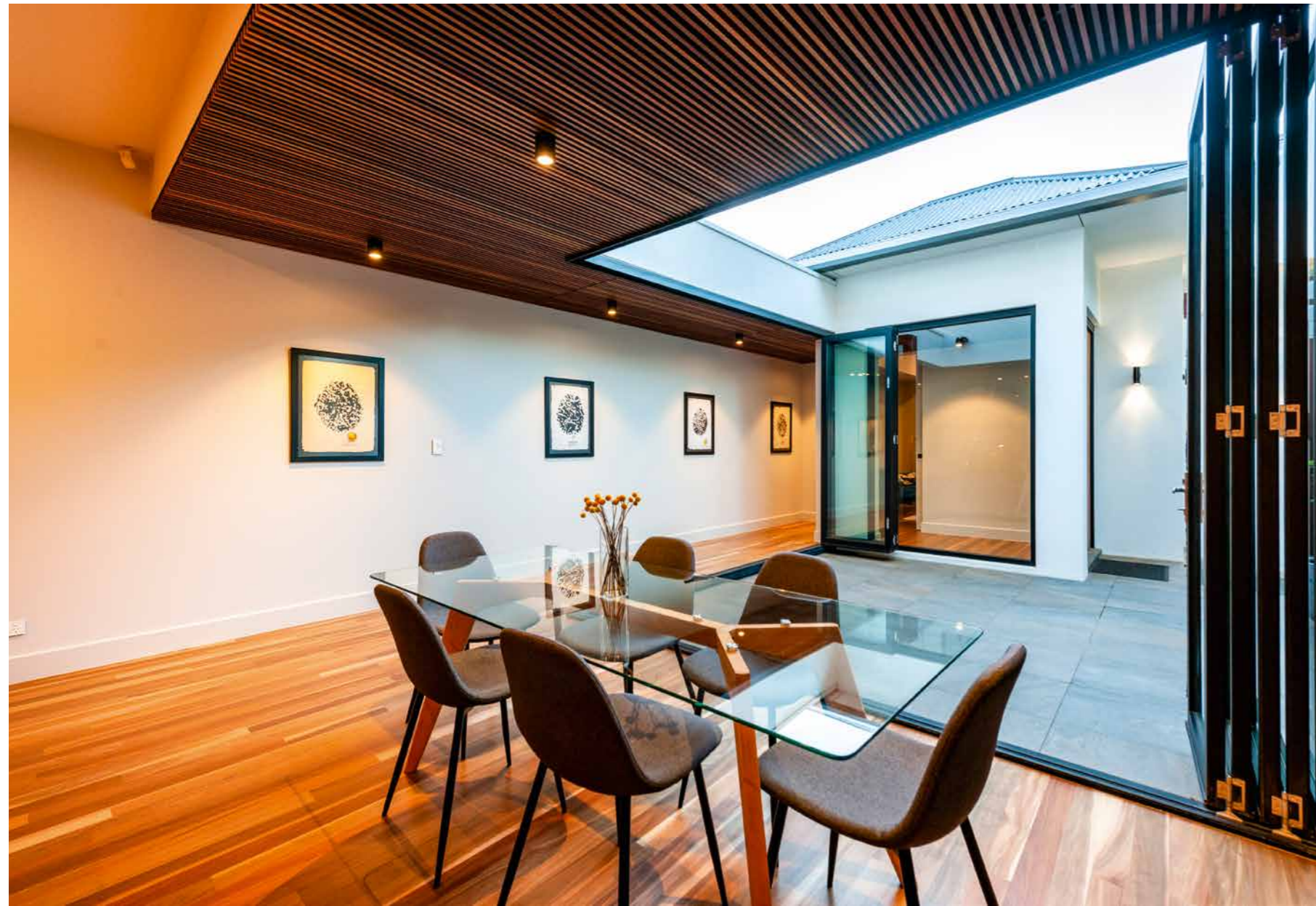
WORDS BEN KELLY PHOTOGRAPHS ROB MASTROPOLITO

# SLIDING DOORS

Despite its narrow frontage, this spacious inner-city abode shows exactly what's possible with elegant design and intelligent construction.



**Below:** Daniel Jordan Homes used sophisticated timber finishes throughout the home, demonstrating the versatility of modern materials. **Opposite page:** Owners Michelle and Russell Burton are delighted with their home. **Previous pages:** The courtyard and open living space connect to create a centrepiece for the home.



From here you can walk to the city, Adelaide Oval, and all the lovely eateries of North Adelaide.

**W**hen Russell and Michelle Burton purchased a narrow allotment just six metres wide in the iconic heritage zone of North Adelaide, they realised the challenges of the canvas they had chosen.

But Russell, being the director of a prominent real estate company, knew the location was just too good to pass up. "It's in such a great cosmopolitan spot," Russell says. "From here you can walk to the city, Adelaide Oval, and all the lovely eateries of North Adelaide on O'Connell Street.

"It has extremely good value when you compare it with similar locations in Australian capital cities and around the world."

Russell and Michelle purchased the land at auction, having first met with Daniel Jordan Homes to investigate whether their vision for a spacious three-storey home could be achieved despite the narrow footprint. They knew the builder was up to the job, having constructed their previous home.

This project posed some new challenges, from the impressively-designed roof deck, to the maximisation of space throughout the

Photograph Peter Hoare.





We wanted lots of space with two great separate living areas.

home. Extensive crane-work was needed to build the second and third storeys, and for this the support of the owner of a neighbouring block alleviated some logistical requirements.

The owners are ecstatic with the end result, completed in December 2018. "We wanted lots of space with two great separate living areas," Russell says. "The roof deck is a bonus, providing a beautiful open entertaining area with a barbecue and small kitchen.

"That was something quite special we incorporated into the design and thankfully we were able to get it approved, although it wasn't an easy process."

The merbau timber front door opens to an entrance where folding glass doors open the corridor and living area to the courtyard, creating one large indoor-outdoor entertaining space.

**Below and opposite page:** Natural light from the first floor filters through the floating timber stair treads and glass balustrade to the kitchen, dining space and study nook, completed with a refined palette of timbers, Caesarstone and dark tapware.







Photograph Peter Hoare.

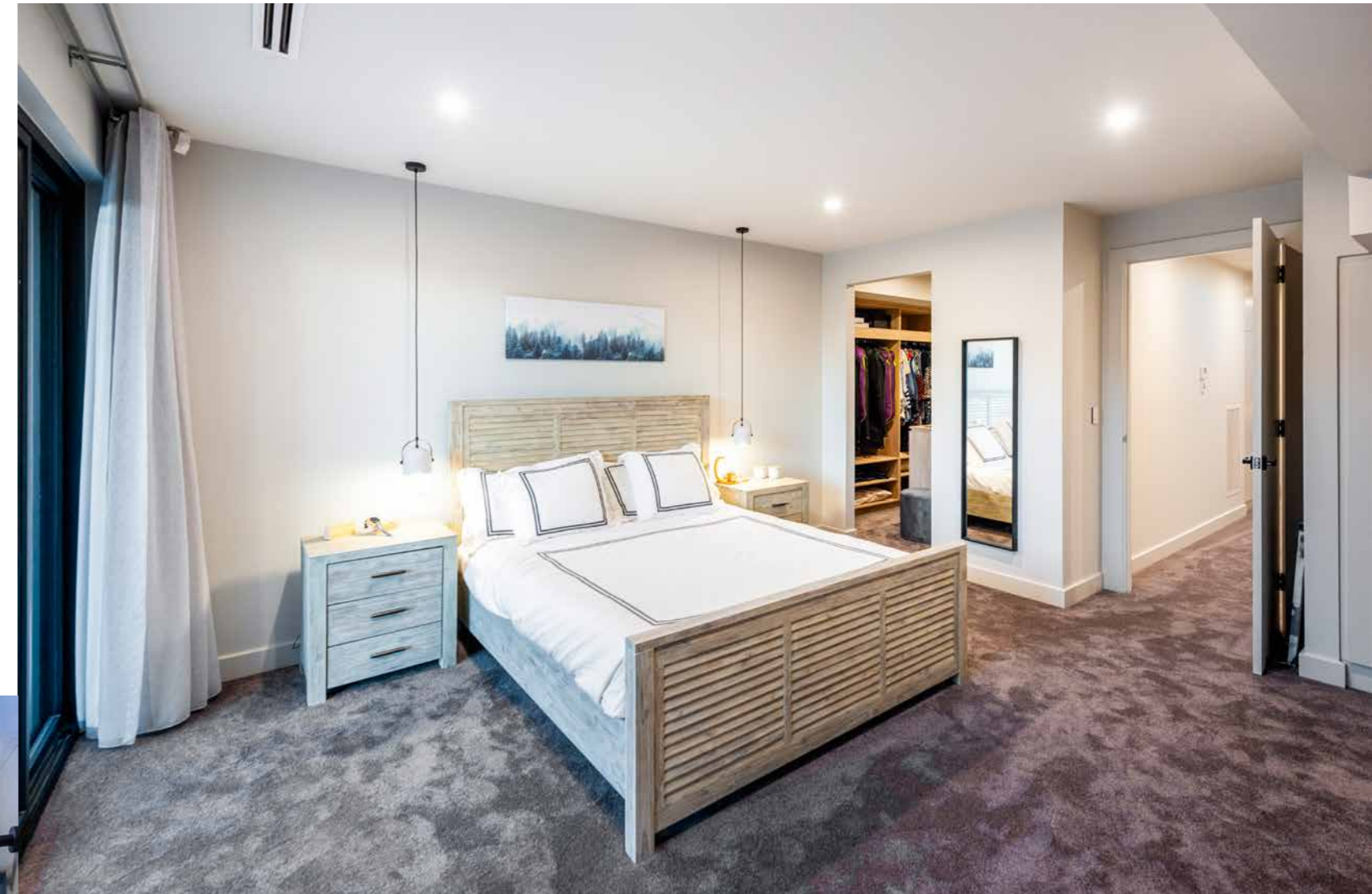
While holidaying in South Africa, Russell and Michelle visited an elephant sanctuary, where they acquired artwork made with the footprints of rescued animals. These prints hang in the entry corridor, which welcomes guests with the atmosphere of an art gallery. The entire space is bathed in natural light through the glass doors, as well as from skylights on the second level, with sunlight making its way down the floating stairway of glass and timber.

Between the courtyards, balconies and rooftop, there is extensive outdoor space and



**Above and opposite page:** Merbau beams have been used to create an architectural canopy, defining the pathway from the gate to the front door.





natural light not normally afforded to similar inner-city abodes.

"Being able to open the cafe doors to bring the outdoors in certainly creates a very desirable living space," Russell says.

A highlight of the interior design is the cabinetry and kitchen surfaces. Michelle was involved with the design of a number of features, including the dropped timber benchtop in the kitchen and a dressing table in the master suite's walk-in robe. The timber kitchen benchtop brings warm balance to the Caesarstone, while the dressing table is a centrepiece with its glass top. "Daniel Jordan Homes did an excellent job and the home was finished to a high standard. It's nice to have those extra details," Russell says.

The result is a beautifully designed home that caters for practical living.

Tony Trasente, director of Daniel Jordan Homes, says today's materials and technology give builders the flexibility to use timber liberally in modern homes. "Timber creates



**Above:** A glass-top dresser is a feature of the master bedroom's walk-in wardrobe. **Top:** Pendant lighting continues to be a signature design trend in bedrooms, making a visual statement while freeing up space on bedside tables. **Opposite page:** Each bathroom has its own personality with different timber and tile finishes, the laundry is minimalist and functional.

You've got to make the house liveable, but you also want some elegance.





**Above:** The bedroom's balcony has a view of the front entrance, hallway and courtyard. **Top:** Builder Daniel Jordan Homes overcame engineering and logistical challenges to create the suspended rooftop deck that greatly increases the home's outdoor entertaining space while providing a view of the North Adelaide skyline.

an elegant finish and this home has beautiful timber features," Tony says. A great example is the spotted gum flooring which is reflected in the living area's ceiling, also dressed with spotted gum.

Tony praises the home's designer Mario Civitarese, of In Design Works. As part of the design, Mario engineered a complex steel structure to support the concrete slab of the roof deck. "That concrete slab is there for the next 500 years, it's not going to go anywhere," Tony says.

The elegant exterior facade was topped off with merbau timber beams that create a canopy from the front gate through to the front door. The entrance is set to the side of the house, creating interest and adding security. The timber canopy creates balance and symmetry, while softening the facade. It also provides an option to string wire across to grow climbing foliage.

"You've got to make the house liveable, but you also want some elegance, which can sometimes be achieved with the simple lines of the architecture," Tony says. "It makes this project stand out from the rest." 🌿

## ROOF TILES TO SUIT *your lifestyle*

Match your own style and home design with roof tiles from Bristile Roofing. Choose from the most beautiful and enduring range of roof tiles in Australia. With a wide selection of profiles and colours and the unique benefits of strength, durability, low maintenance and comfort, you'll have more time to enjoy life.

To choose your style visit [bristilerooting.com.au](http://bristilerooting.com.au)  
or call 1300 274 784

100 YEAR  
TERRACOTTA TILE  
WARRANTY

COLOUR  
FOR LIFE  
FADE PROOF  
WARRANTY

 **bristilerooting**<sup>®</sup>

A brand of  
**BRICKWORKS**  
— BUILDING PRODUCTS —