

MAKE A WISH

WORDS **PENNY YAP** PHOTOGRAPHS **PETER HOARE**

With a north-facing outdoor entertaining area and a gallery walkway looking onto a central garden, this dynamic villa-style home fulfils every one of the owners' desires.





Above: The tiled swimming pool is an oasis in the centre of the home, where a waterfall of Kanmantoo stone echoes the fireplace in the living room and the walls at the entrance, while bold black Alucobond bars create a piano key effect over the water. **Below:** Walls of dry stack Kanmantoo stone flank the monumental American walnut pivot door. **Opposite page:** The gallery walkway with its asymmetric window is the home's standout feature, softened by an acoustic ceiling of spotted gum. **Previous pages:** The strikingly modern exterior of the home gives a clue to its architectural interior, with the raised ceiling of the entrance hall visible above the wide, shady porch.

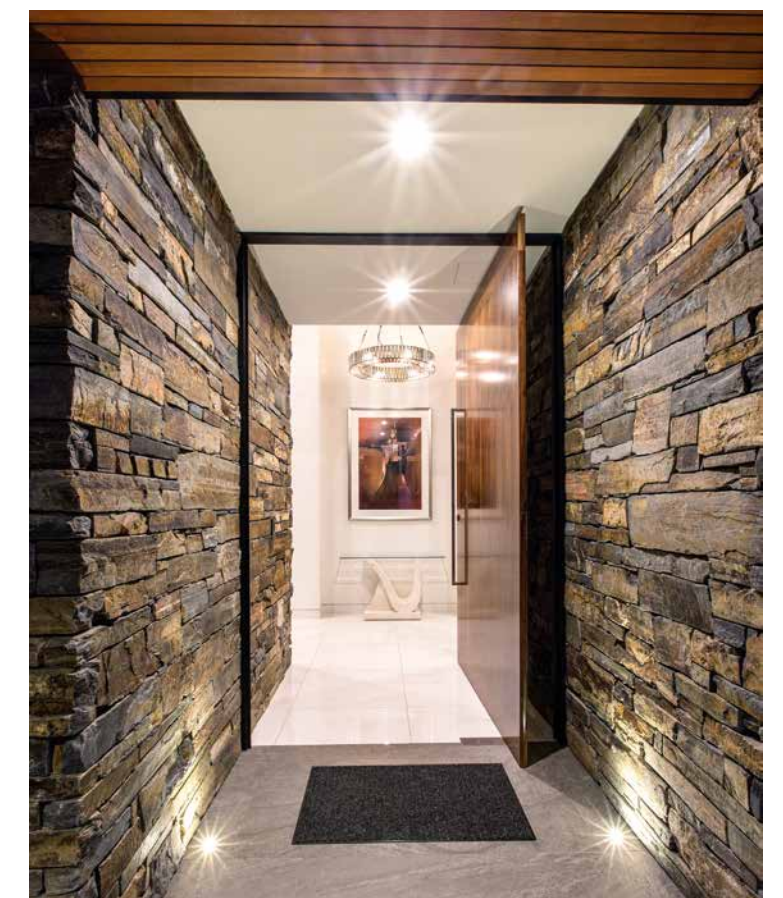
WHEN BUILDING THEIR THIRD HOME IN ADELAIDE, Paul and Alison Bugg were undeterred that their chosen block didn't face in the direction they had been hoping for. Instead, they created a uniquely-shaped villa to maximise the potential of the location they had.

"Our previous homes all had a backyard facing north, which we wanted again," says Paul. "But we couldn't find a block like that. This block runs east-west, so this house was designed in a U-shape to wrap around so the outdoor entertaining area still faces north. Otherwise we would have had a west-facing backyard, and there's nothing you can do to keep that intense sun out."

Designed by Mario Civitarese and constructed under the watchful eye of builder Tony Trasente of Daniel Jordan Homes, the property was completed in April 2017. The couple had a substantial wish list of features and finishes they wanted to include. "We didn't cut any corners, we put everything in this house that we wanted. Tony's response to any question was, 'Ali, we can do anything!'" says Alison.

Underfloor heating, a CBUS lighting system and a 13 kilowatt solar system were also part of the plan, however one feature was top of the agenda.

"The first thing on our wish list for the last house we built before this one was an open fire. Do you think we put it in there? We didn't. We had to add it five or six years later," says Alison. Consequently the four-metre wide dry stack Kanmantoo stone wall and Jetmaster gas fireplace in the living room was non-negotiable. "We actually





Above: The freestanding bathtub and tap look out through a postcard window to the central garden, with privacy ensured by a frangipani tree, the marbled tiles run the full height of the 4.2-metre ceiling. **Above right:** The muted tones of the guest bathroom create a restful environment, with quirky pendant lights adding a touch of fun. **Top:** A floor to ceiling corner window brings the garden and swimming pool into the spacious master suite, where the oversized headboard was brought from the owners' previous home.

went out to the quarry and selected the type of pieces we wanted."

The stone fireplace also inspired the entrance to the home, with two walls of the same Kanmantoo stone flanking the colossal American walnut front door, instilling a wow-factor from the very first moment.

"We always wanted a big front door. At our last house we had double doors that we could open up. I wanted a pivot door, and with the stonework it worked together," says Paul.

Rooms either side of the front door feature angular corner windows adjoining the stone walls. To the left is a study, and to the right block-out blinds mean the parents' retreat sitting room can be used as a fourth bedroom if required. The master bedroom opens onto the central garden and swimming pool, facing the living area across the neatly tended lawn. The en suite is a retreat in itself, with a dramatic stone bathtub and freestanding tap dominating the room, next to a narrow postcard window with a view of the frangipani tree outside.

The star piece in the home is the 23-metre long gallery that connects the front of the home to the main living area, featuring a wall of glass that rises from floor level to full height towards the rear. At the far end of the walkway, a picture window in the living room frames a lipstick maple outside. "Mario was fabulous; he had so many ideas for this house. He saw the gallery and window on a commercial building and asked if he could try playing around with it for this house. We said 'go for it'," says Paul.

The gallery has been finished with a spectacular acoustic ceiling in spotted gum, which reduces noise and softens what could have seemed like a sterile space. Parallel to this walkway, a separate, hidden hall leads to two more bedrooms, a main bathroom, a powder room, the spacious laundry and garage, with multiple tall cupboards along the way for plenty of storage. Giant sliding doors glide effortlessly across each end of the gallery and close off the entrances to the bedroom hallway to define the areas



designfurniture est. 1986

It's a new season...

The perfect opportunity to do something NEW something BOLD and something BEAUTIFUL

Breathe new life into your living space this autumn, with our stunning hand crafted designs like the ever stylish Grace Bed now exclusively available at Domayne (Marion SA).

Experience the Design Furniture difference today!

www.designfurniture.com.au



abbode
INTERIOR PRODUCTS

NOW REPRESENTING

ANNA SPIRO DESIGN



RUGS | PRINTS | FURNITURE | WALLPAPER | LIGHTING

49-51 MAGILL ROAD, STEPNEY SA 5069
P. (08) 8362 9909
E. INFO@ABBODE.COM.AU
WWW.ABBODE.COM.AU



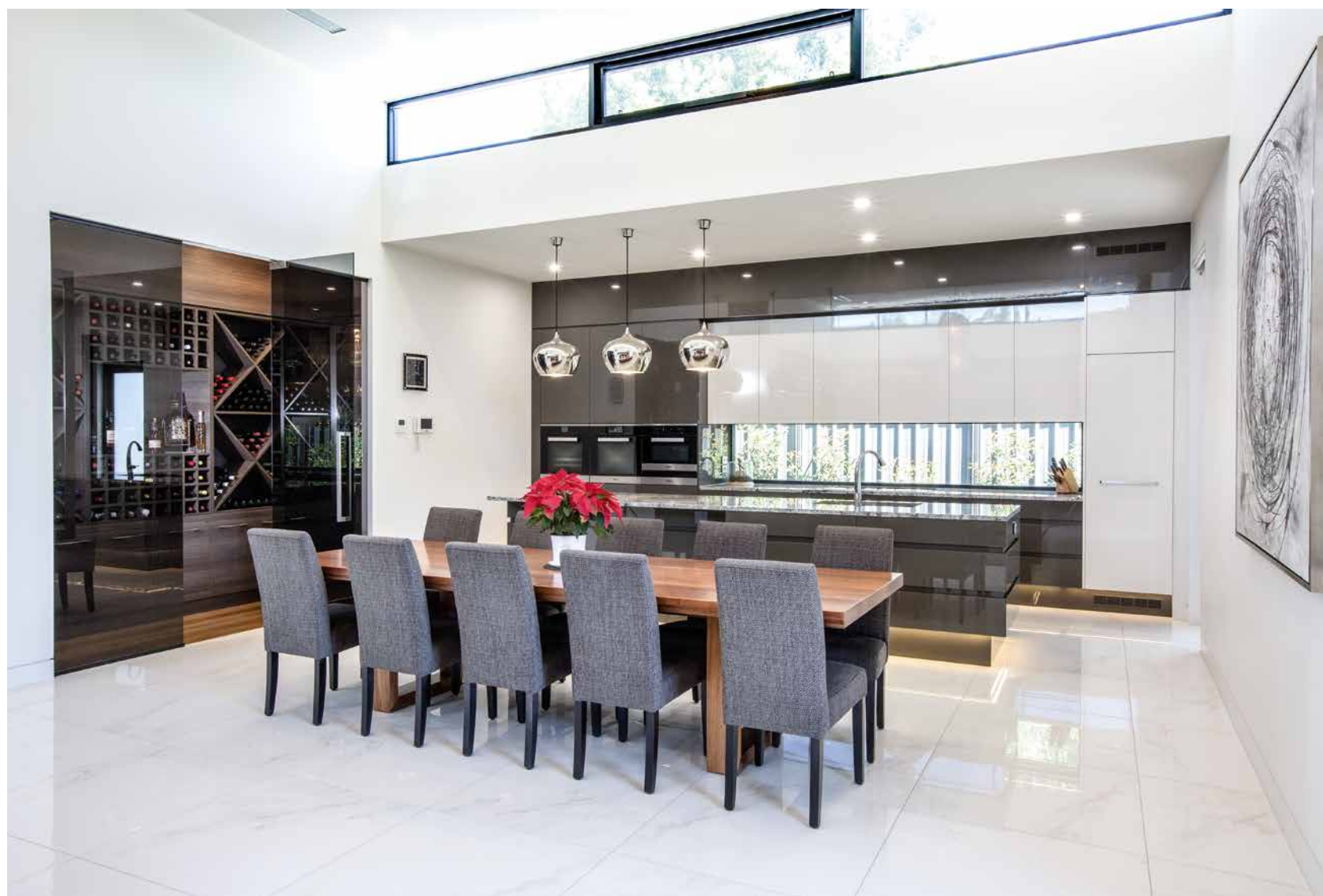
**Be
inspired
by colour**

We have all the quality Resene paint, colour and advice you need to get a superb finish on your decorating projects.

Come in and see us today!

Design 238
238 Unley Rd, Unley
Ph 08 8272 6886

Formula Paints
141 Fifteenth St, Renmark
Ph 08 8586 4400



Above: The clean lines of the kitchen won an HIA Award for design, the 10-seater spotted gum dining table sits within easy reach of the purpose-built wine room, while high windows open to allow cross-flow of air. **Opposite page:** A wall of Kanmantoo stone is central to the open plan living area, complete with wide gas fireplace and spotted gum mantelpiece, which is constantly adorned with a large arrangement from Flowers by Alice. **Following pages:** The home has been designed to wrap around a central garden, creating a north-facing outdoor entertaining space on an east-west block.

when required. "If we just want to air-condition this end, or if the grandchildren are asleep in the bedrooms, we can shut the doors. We could have a party and they wouldn't know."

The open plan living area at the rear of the home has a soaring 4.2-metre ceiling, echoing the entrance hall at the front. Narrow windows have been placed at the top of these high spaces to allow for cross flow of air and extra light. "They do let a lot of light in. I noticed the other day that when you sit in the living room, everywhere you look you can see greenery or a tree," says Alison.

The striking black and white granite kitchen countertop was an early decision in the process and set the tone for the minimalist interior. "That was the first thing we selected for the house. I wanted the whole house to be a blank canvas, so at some stage if I wanted to change the colour of this room, I could. I could change anything, cushions on chairs, rugs, throws, to make the room different. We like simple aesthetics; not too busy," says Alison.

The thoughtfully laid out kitchen and concealed butler's pantry was brought to life by Alby Turner & Son, with a suite of Miele appliances.

"The main goal here was a kitchen with a decent sized pantry, so you can put things away out of sight. It's very convenient. Our old

house had a reasonably-sized pantry, but it had really deep shelves. So every six months you end up ditching stuff because you didn't know it was there. So I said I only wanted the shelves two or three cans deep so you can see what you've got," says Alison.

Adjacent to the kitchen is the wine room. Hidden behind tinted glass, the layout of the interior took some time to get right. "So many people have come in and said, 'do you mind if I take a photo of that so I can copy it?'" says Paul

Accessible from the living area through large sliding doors, the outdoor kitchen, dining and seating spaces next to the swimming pool are cooled by evaporative air conditioning in summer. "Because it's so protected I thought it would end up being like a hot box. On a 40 degree day, we wouldn't be able to sit outside. We were going to put fans in there but they just move hot air around and clutter things up."

The dual Velux skylights have retractable shades to keep heat out in summer but let extra light through in winter, with heaters in place for colder days. The result is an additional room that gets used all year round.

"It's a very easy house to live in; we're done now," says Alison. With their whole wish list ticked off, Paul and Alison don't think they'll be building again. 🌿



WHEN YOU SIT IN THE LIVING ROOM,
EVERYWHERE YOU LOOK YOU CAN
SEE GREENERY OR A TREE.

